

Fytotextile living wall installation manual

Greenscene Group

STEP 1

Ensure the structure to which the Living Wall will be attached is sound in construction and can support 40kg/m².

Elevation can be brick, concrete block, rendered wall, free standing fence, metal frame or a plaster board stud wall in interior installations.

In some cases, further strengthening maybe required. If in doubt, please consult a structural engineer



STEP 2

Using the top left as a starting point attach a 50mm x 50mm treated timber batten the entire length of the Living wall area.

Secure these using 100mm x 8mm hammer fixings.



STEP 3

Attach the first vertical batten flush with the horizontal batten. Now we have starting point.

Attach the supplied hanging rail with 30mm stainless steel screws. The C side of the hanging rail has to be placed at the top.



STEP 4

Once the hanging rail has been secured, slide the first piece of Fytotextile into position.

The Fytotextile should be flush with the vertical timber batten.



STEP 5

When the first piece has been placed into position, use the fabric itself to mark the position of the centre of second vertical 50mm baton.



STEP 6

Slide the Fytotextile over to the next hanging rail to mark position for next vertical batten to be hung.

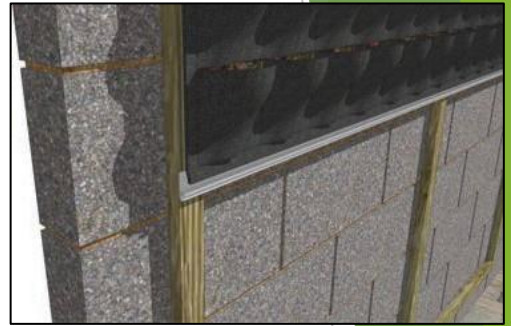
Once all verticals have been installed, use the Fytotextile to mark the position for the horizontal battens. Keep the bottom of the batten flush with the bottom of the module



STEP 7

Once the horizontal battens have been installed attach the remaining hanging rails, C side down.

This allows the Fytotextile from above to fit perfectly into the irrigation envelope. The bottom of the hanging rail should be flush with the bottom of the batten.



STEP 8

When the hanging rails have been installed, slide the remaining Fytotextile fabric into position and Velcro together.

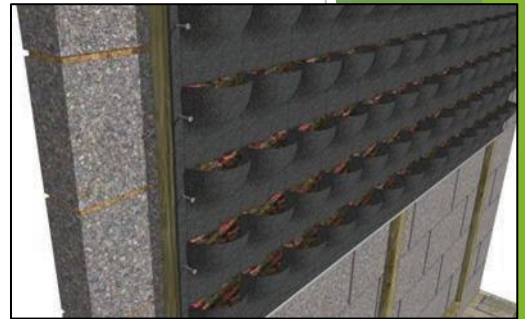


STEP 9

Secure the Fytotextile to the sub-frame using 30mm black lacquered screws.

These are to be placed at each pocket and through the centre of the Velcro strips.

Make sure not to pierce the waterproof layer of the Fytotextile.



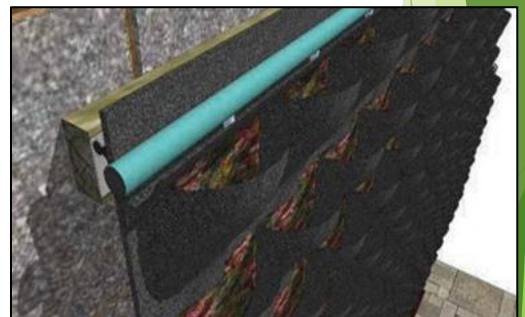
STEP 10

Install irrigation pipe into the irrigation envelope on each module.

16mm pipe with emitters spaced over every planting pocket will be required. Ensure emitters are facing down.

Install end caps at one end of each line and connect other end to riser supply pipe.

Supply pipe can now be connected to the tap



STEP 11

If required a timber or metal trim may be installed to the sides and top of the Living wall. This will also hide the irrigation risers.



STEP 12

The Living wall is now ready to plant.

The pockets in the Fytotextile can accommodate between a P9 (9cm) and a 2L (13cm) plant.

Note that if using a P9 sized plant a small amount of extra soil may have to be added.



STEP 13

Continue planting until the wall is completed. Once finished run the irrigation system to saturate the newly planted plants and set the timer on the irrigation controller to a suitable run time.

A usual irrigation cycle would normally run for seven minutes. The frequency of irrigation cycles will vary due seasonality, orientation and exposure.



plants@work
GOLD LEAF
AWARD WINNING
COMPANY